

Protective Measures for Vaccinating During the Pandemic

During the COVID-19 pandemic, vaccination is especially critical to reduce the burden of serious and preventable communicable diseases in our communities. These protective measures will help prevent the spread of COVID-19 when providing vaccination services.

Minimize Chances for Patient Exposure

Share information with patients.

Communicate with your patients in advance about measures that have been put in place to ensure their safety.

Screen for COVID-19.

Screen patients for COVID-19 risk (e.g., possible exposure, pending test results, underlying medical conditions) and COVID-19 symptoms before and at the visit. Promptly isolate anyone exhibiting symptoms.

Separate well and sick patients.

Plan vaccination services for well patients at different times and in different areas from the times and areas in which you provide sick patient care.

Control Patient Flow.

Limit and monitor facility points of entry, control direction of patient flow, and install barriers to limit physical contact between staff and patients at triage. Limit entry of non-essential visitors.

Maintain distance.

Ensure physical distancing of at least 6 feet between patients and staff where feasible, except during vaccination.

Consider all needed vaccines.

When possible, screen for and provide all vaccines due or overdue at the visit. If feasible, assess vaccine needs prior to the patient's arrival to reduce in-person visit time.

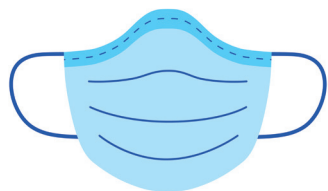
Ensure All Staff Follow Infection Control Guidance

Adhere to standard infection control precautions.

Follow standard infection control precautions, including washing hands and/or using hand sanitizer and thoroughly cleaning the vaccination area between patients.

Wear PPE.

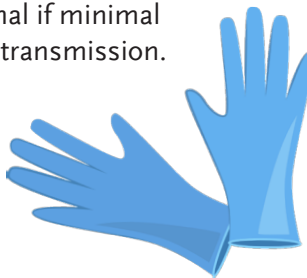
Use appropriate personal protective equipment.



Face mask: Recommended for all healthcare providers (N95 masks not required for vaccination services).



Eye protection: Recommended in areas of moderate/substantial community COVID-19 transmission; optional if minimal or no transmission.



Gloves: Recommended for intra-nasal or oral vaccines (FluMist or rotavirus); optional for intramuscular or subcutaneous injections. Change gloves and practice hand hygiene between patients.

Post signage.

Prominently display reminders about face coverings (masks), physical distancing, and hygiene in patient areas.

Require masks.

Require appropriate face covering for people age 2 years and older, if tolerated.

Ensure proper hygiene.

Ensure respiratory hygiene, cough etiquette, and hand hygiene. Make hygiene supplies accessible, including hand sanitizer or soap and water, tissues, and waste receptacles.

Disinfect surfaces.

Frequently decontaminate high touch surfaces in both patient and staff areas.